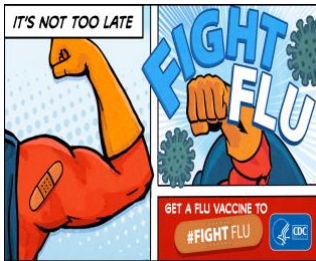


# The Leaguers, Incorporated

405-425 University Avenue • 2nd Floor • Newark, New Jersey 07102  
973-643-0300 • Fax 973-624-1265 • E-Mail [info@theleaguers.org](mailto:info@theleaguers.org)

## HELP US KEEP OUR CHILDREN SAFE AND HEALTHY!



**The New Jersey Department of Health and Senior Services (DHSS) requires all children, ages 6 months to 59 months, attending a child-care center or preschool facility to receive a seasonal Influenza Vaccine.**

**Preschool aged students are vulnerable to flu related complications, the major one being Pneumonia.**

Leaguers Parents and Guardians, the value of immunizations is even more evident during this pandemic. Please see the following pieces of information provided by the New Jersey Department of Health (NJDOH) to help support you:

- NJDOH will not waive the vaccine requirements nor will there be any extensions for the upcoming school year. Students will be expected to comply with all vaccine requirements prior to attending virtually or in-person at a New Jersey child care/preschool and school. New Jersey still allows for medical and religious exemptions when applicable.
- Students who are learning remotely may still be at risk in the event they meet up with friends and/or congregate in their communities.
- Many healthcare practices have implemented additional precautions and policies to ensure vaccines can be administered in an environment that maximizes patient safety. Please contact your child's healthcare provider to set up an appointment and to learn what policies and procedures are in place to for an immunization visit. Flu vaccinations are also being administered at the following locations:

### NEWARK

**The City of Newark's  
Department of Health and  
Community Wellness**

**Days:** Mon- Fri 9:30am – 3pm  
**Where:** 110 William Street  
#: 973-733-7580  
973-558-3459

**Jewish Renaissance  
Medical Center**

**Days:** Mon- Fri 9am – 5pm  
2<sup>nd</sup> Saturdays of the month  
**Where:** 21 Quitman Street  
#: 973-679-7709

**Newark Community  
Health Center (NCHC)**

**Days:** Mon- Fri 9am- 7pm  
Saturdays 9am- 5pm  
**Where:** 751 Broadway  
101 Ludlow Street  
92 Ferry Street  
#: 800-994-6242

### NEWARK cont.

**Saint James Health, Inc.**

**Days:** Mon- Fri 8am- 6pm  
**Where:** 228 Lafayette Street  
#: 973-789-8111  
**or**  
**Where:** 332 South 8<sup>th</sup> Street  
#: 973-245-0060

### EAST ORANGE

**Newark Community  
Health Center (NCHC)**

**Days:** Mon- Fri 9am- 7pm  
Saturdays 9am- 5pm  
**Where:** 444 Williams Street  
#: 800-994-6242

### IRVINGTON

**Newark Community  
Health Center (NCHC)**

**Days:** Mon- Fri 9am- 7pm  
Saturdays 9am- 5pm  
**Where:** 1148-1150 Springfield Ave  
#: 800-994-6242

### UNION COUNTY (Roselle & Elizabeth)

**Union County Social Services**

**Days:** Mon- Fri 9am- 3pm  
**Where:** 40 Parker Road, Elizabeth  
342 Westminster Avenue  
#: 908-965-3868

**Neighborhood Health  
Services Corp.**

**Days:** Mon- Fri 8am- 5pm  
**Where:** 184 1<sup>st</sup> Street, Elizabeth  
#: 908-355-4459

**Borough of  
Roselle Health Department**

**Days:** Mon- Fri 9:30am- 4pm  
**Where:** 210 Chestnut Street, Roselle  
#: (908) 659-4329